

TOLL ROAD
ENTRANCE

LANE

Folks on the go ...

go *Yellowstone*



19B illustrated above

Yellowstone

travel trailers

YELLOWSTONE, INC. 2400 W. MISHAWAKA ROAD / ELKHART, INDIANA / PHONE JA 4-1930



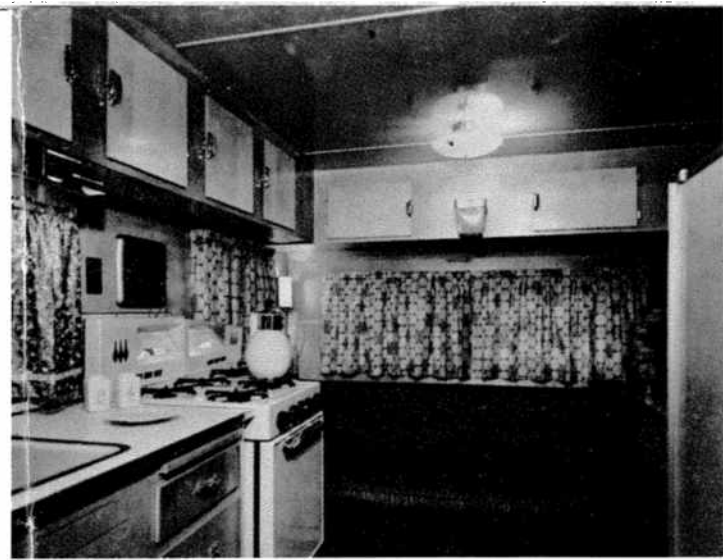
Interior Model 19B



Interior Model 19BF



This shows the bedroom and part of the bath featured in Yellowstone's 24R and 27R models. Has combination tub and shower, large six drawer vanity and two overhead cabinets. Be sure to study floor plans to select the Yellowstone that best suits your needs.



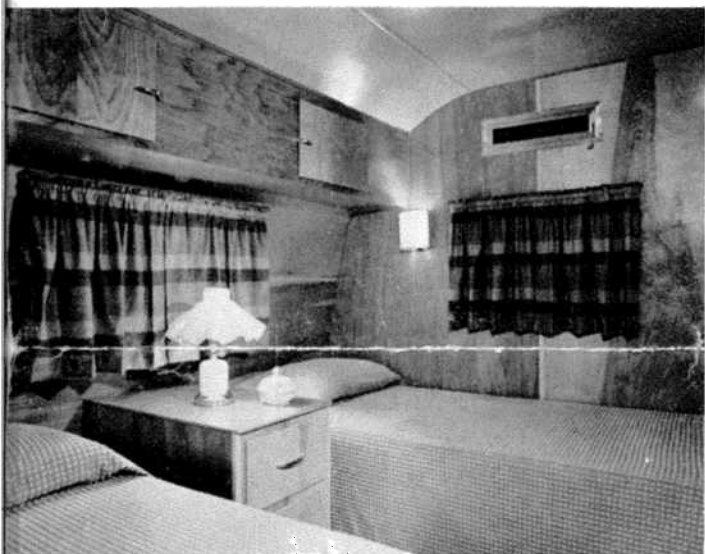
Plenty of cabinet storage space is planned in Model 19B. Efficient kitchen features a four burner range and oven. Available with either a gaucho or double bed. Lounge also converts into a bed.



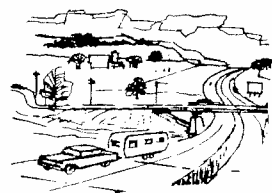
Note the generous window area for a bright and pleasant living room. The comfortable lounge converts easily into a bed for two. Plenty of overhead storage and built-in end table with two drawers. This arrangement is offered in Yellowstone's 27 foot models.



In Yellowstone's Model 16C, the three-fold gaucho bed planned across the rear opens up into a bed for two. The kitchen area offers ample work and cabinet space with three burner stove and oven. Dinette area in the front of this model also converts into a bed.



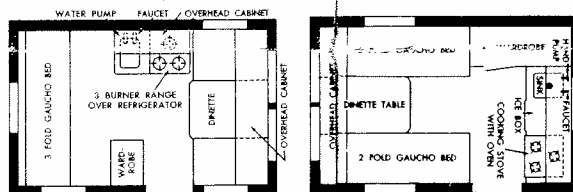
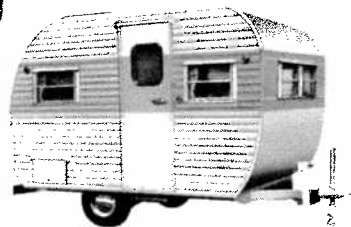
This attractive bedroom is featured in both Yellowstone models 24B and 27T. It offers privacy and can be planned with an island bed if preferred. Note the overhead storage area and large night table.



Folks on the go... go **Yellowstone**

Selecting the Yellowstone and a pleasure too. plans, sizes, specific mind, plan a visit to more about Yellowstone address, we'll gladly

13'



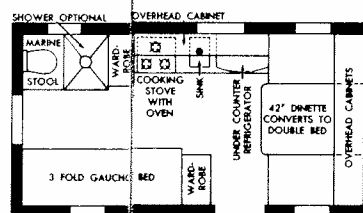
13G Available with Cab-Over

13C

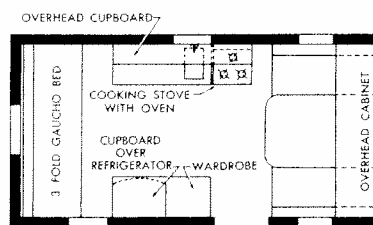
SPECIFICATIONS Overall length 13' • Overall body length 11' • Overall width 6 1/2' • Interior height 6'2" • Weight 1500 lbs. • Hitch wt. 210 lbs. • 13x6:00 tires • 4" steel channel frame • Water tank and pump • Gas light • Three burner range, Model 13G • Three burner range with oven, Model 13C • Ice Box • 12 volt light • Hook-up cord • Brakes, Optional.

19'

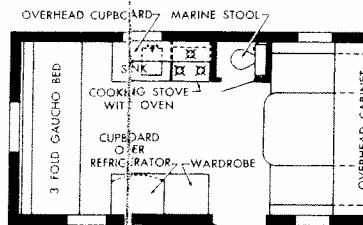
SPECIFICATIONS Overall length 19'6" • Overall body length 17'6" • Overall width 8' • Interior height 6'6" • Weight 3200 lbs. • Hitch weight 19B 295 lbs.—19BF 475 lbs. • 15x7:00-8 ply tires • 4" steel box channel frame • 17,000 B.T.U. gas heater • Electric brakes and control • 19B apt. size range, 19BF built-in range, each with 4 burners and oven • 4 cu. ft. gas refrigerator • 10 gallon gas water heater • Pressure water system • Marine stool • Septic (holding) tank • Gas wall heater • Gas light • 14' awning rail • Electric exhaust fan • 12 volt light.



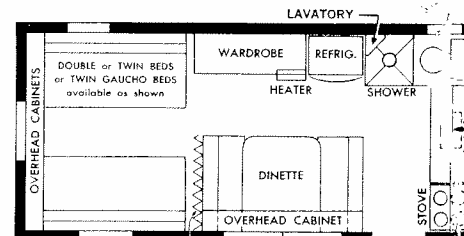
16R Available with Cab-Over



16C Available with Cab-Over

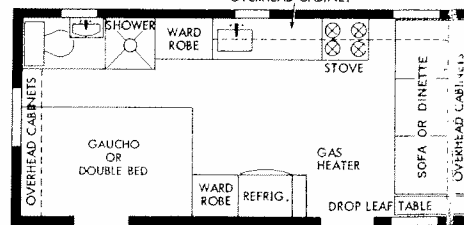


16S Available with Cab-Over



19BF

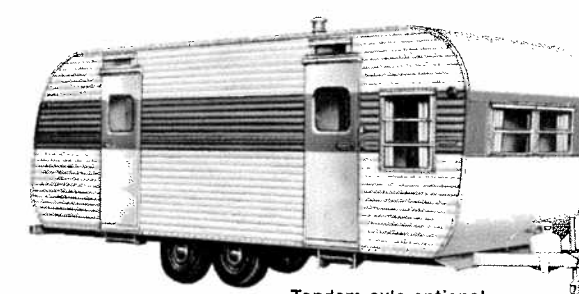
Accordion door closes bedroom area



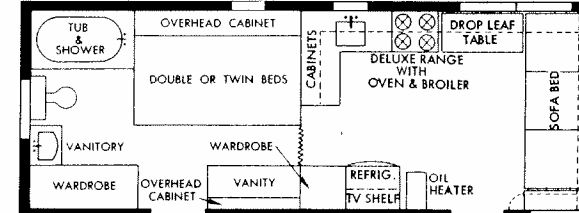
19B (shown on cover page)

24'

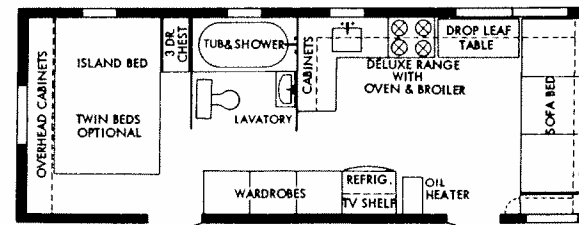
SPECIFICATIONS Overall length 24' • Overall body length 22' • Overall width 8' • Interior height 6'6" • Weight 4140 lbs. • Hitch weight 450 lbs. • 15x7:50-8 ply tires • Tandem axle optional with 6 ply 15x7:00 tires • 5 1/2" tubular steel frame • 20,000 B.T.U. oil heater with under-floor heat to bedroom • Electric brakes and control • Deluxe apartment size range with clock, timer, window oven and broiler • 10 cu. ft. ice-electric refrigerator with freezer chest • 18' awning rail • 6 gallon water heater • Electric exhaust fan.



Tandem axle optional



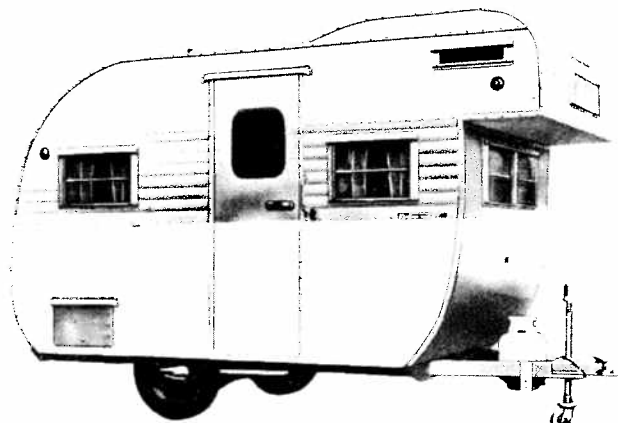
24R



24B



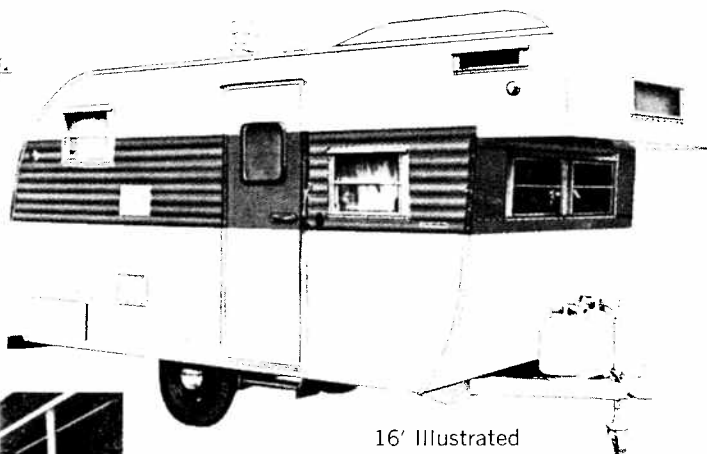
It's the way this model 19BF was planned that makes it seem so bright, uncramped. By placing the tidy kitchen and bathroom across the front and leaving the rest of the area open and clear, the whole interior catches a bright and airy feeling. The large picture window adds to this pleasant effect.



13' Illustrated

**... an optional feature in
13', 16' and 19' lengths**

See floor plans for specific models that offer the optional Cab-Over feature.



16' Illustrated

If added bunk space is important in your selection of a Yellowstone, consider a model with the Cab-Over feature. This use of the over-hang area was planned for added sleeping for two and is available in several Yellowstones. Models 13G, 16C, 16S, 16R and 19B can be ordered with this optional feature.

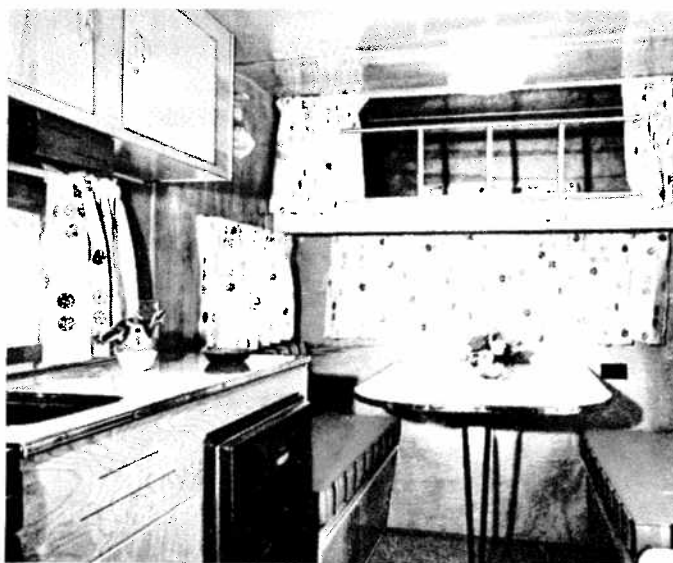


Model 16R

Model 16R



Model 13G



In all Cab-Over models the ladder serves as bed rail. As in all Yellowstones, the dinette table is easily removed and this area also converts quickly into a bed for two.

Yellowstone

Exclusively travel trailers



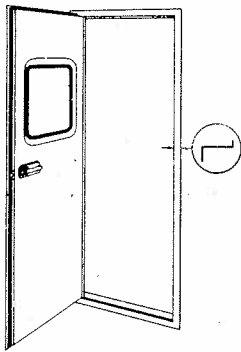
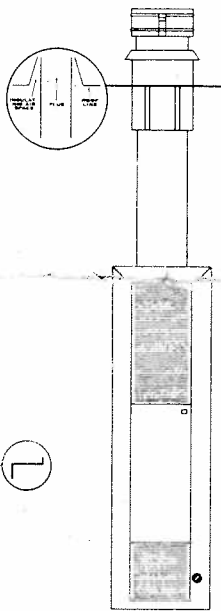
The MHMA approved standards seal shown here is your assurance that Yellowstones are built to published high standards set for travel trailers by Mobile Homes Manufacturers' Association. This certifies that a Yellowstone is built to protect your safety and health. All electrical wiring is of Underwriters' Laboratories approved wire, devices, fixtures and installed by methods prescribed by code. All electrical fixtures, appliances, plumbing and gas pipes, the chassis and other metal parts are grounded. Each Yellowstone electrical system is tested with 1080 volts before leaving the factory. All plumbing drainage pipes are of new, approved, shatterproof, lightweight plastic. All drainage fittings are of the same material and designed with long, sweeping turns

to avoid clogging. All plumbing fixtures are properly trapped and vented. All water and gas systems are specified by code as to size, type and gauge. All water and gas systems are tested on each unit and must hold 100 pounds per square inch pressure for 15 minutes without any drop in pressure. All heating appliances are tested and approved by either the American Gas Association or Underwriters' Laboratories for correctness of design and safety and installed with proper venting to insure safety.

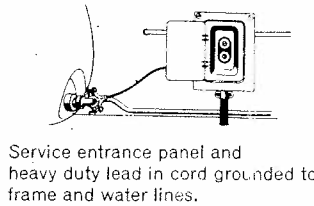
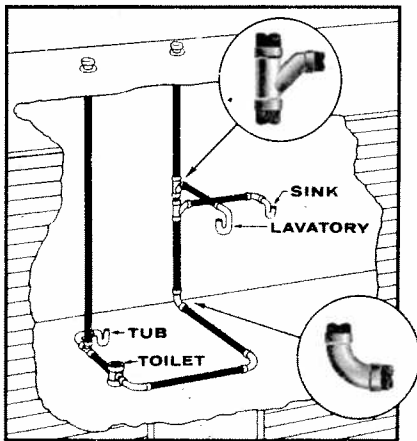
SELF-CONTAINED PACK optional on all 24'-27' models.

Marine stool. Septic (holding) tank. Bowen 10 gallon gas water heater. Gas light. 20 gallon pressure water system. 4 cu. ft. gas refrigerator. Optional, 6 cu. ft. gas refrigerator, or combination gas and electric refrigerator. Available, 12 volt pressure water system.

U. L. or A. G. A. approved heating appliances properly vented.

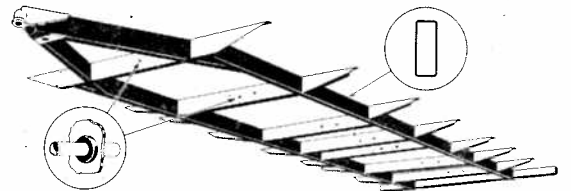
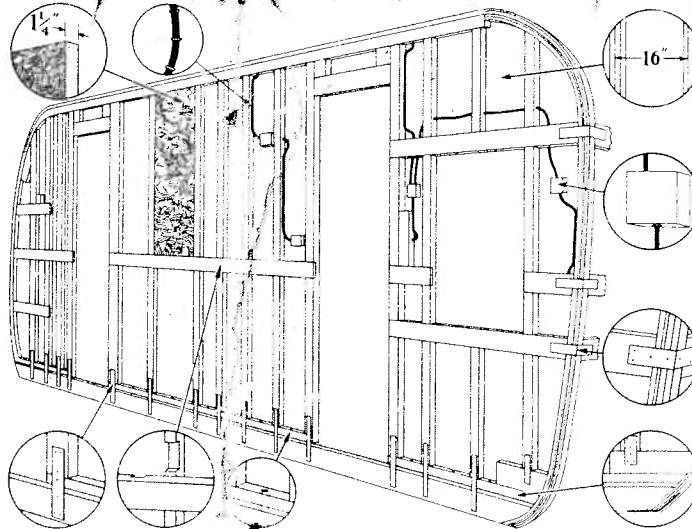


Solid, house type, pre-hung door and jamb.



Service entrance panel and heavy duty lead in cord grounded to frame and water lines.

1 1/4" thick fiberglass throughout trailer. Fiberglass stapled in place.



Rugged box channel steel frame. Rubber grommets protect gas piping passing through frame.

All studding on 16" centers.

All U. L. approved wiring and boxes.

Longitudinal members anchored with metal straps.

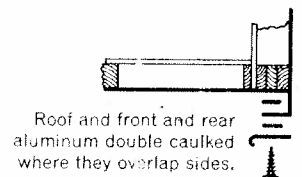
Exterior aluminum overlaps plate at floor line. Double floor construction.

Ventilation between each stud.

Frame work dabbled and interlocking. 2" thick walls.

Each stud fastened with metal strap.

ADDITIONAL FEATURES—Frame and under-carriage under-coated. All hardwood paneling on interior. All glued cabinet construction. Colored appliances in kitchen. Inlaid block linoleum tile.



Roof and front and rear aluminum double caulked where they overlap sides.

YELLOWSTONE, INC. 2400 W. MISHAWAKA ROAD / ELKHART, INDIANA / PHONE JA 4-1930